





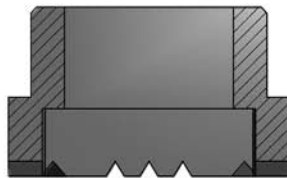


# AS Schöler + Bolte

## Product overview 09

 <p>KF</p>	 <p>KFW</p>
 <p>PF</p>	 <p>RF</p>
 <p>UF</p>	 <p>KK</p>



**KF 15x3**

*Ferrules type*

*Anchor width*

*Anchor thickness*

**02** Flat bar anchor

**07** Rectangular stud

KF 15 x 3 | KF 15 x 5 | KF 16 x 4 | KF 25 x 3 | KF 25 x 5

# AS Schöler + Bolte

Refractory Anchoring Systems



## KFW 13x6

Ferrules type

Anchor width

Anchor diameter

01 Round bar anchor

KFW 11 x 5 | KFW 13 x 6 | KFW 17 x 8



**PF (P) - 10**

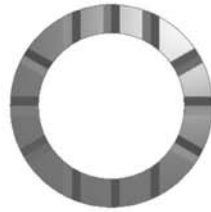
Ferrules type

Former mark

Shank diameter

05 Threaded studs PD/ Stud IP

PF(P)-6 | PF(P)-8 | PF(P)-10 | PF(P)-12 | PF(P)-16 | PF(P)-20 | PF(P)-24



**RF (R) - 10**

Ferrules type

Former mark

Shank diameter

05 Threaded studs RD

RF(R)-6 | RF(R)-8 | RF(R)-10 | RF(R)-12 | RF(R)-16 | RF(R)-20 | RF(R)-24



## UF (N) - 10

Ferrules type

Ferrule mark

Shank diameter

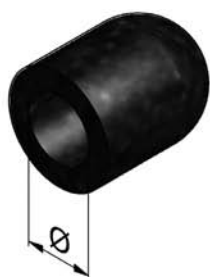
**03** KS/ SF/ SY

**05** DRS/ FFS/ IPS/ TPS

**06** Insulation pin

**07** Threaded studs PD

UF(N)-6 | UF(N)-8 | UF(N)-10 | UF(N)-12 | UF(N)-13 | UF(N)-16 | UF(N)-19 | UF(N)-22 | UF(N)-25



## Plastic cap

for round bar anchors and Threaded studs